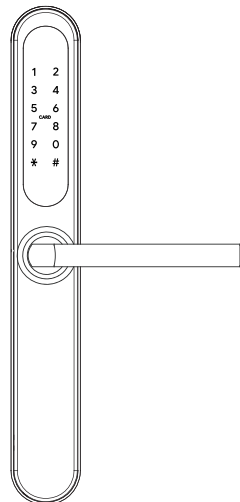


# USER MANUAL

## Product Features

- Multiple credential options
- Auto relock function
- Grade C mechanical cylinder
- Voice guide
- Modern touchpad
- Fake PIN code
- High security mode
- Intelligent user management



**Schlage S-710**  
Digital Door Lock



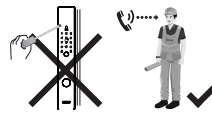
Visit [schlage-locks.asia](http://schlage-locks.asia) or scan the QR code for more information.

## PRECAUTIONS

- Please carefully read this manual prior to installing and using your product. It is crucial to adhere to the instructions outlined in this installation manual during the installation process.
- Please note that the warranty does not cover damages to the product caused by users who fail to follow the instructions provided in this installation manual.

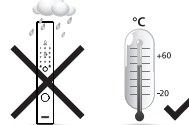
### Do not disassemble the unit by yourself

- This product is a precision electronic device. Do not attempt to disassemble the unit by yourself as it can cause electric shock or may damage the product. If you need field repairation, please contact our qualified service personnel.



### Working environment

- **Storage**  
Temperature: -20°C ~60°C  
Relative humidity: 85%RH (No condensation)  
Do not expose the product to direct sun. The storage period is within 1 year

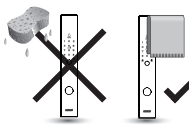


- **Operating conditions**  
Temperature: -10°C ~55°C  
Relative humidity: 85%RH (No condensation)

Prior to installing the digital lock, please ensure that you are in a suitable environment. It is important to avoid exposing the lock to direct sunlight or placing it in high humidity environments to prevent damage to the lock surface and body.

### Cleaning of product

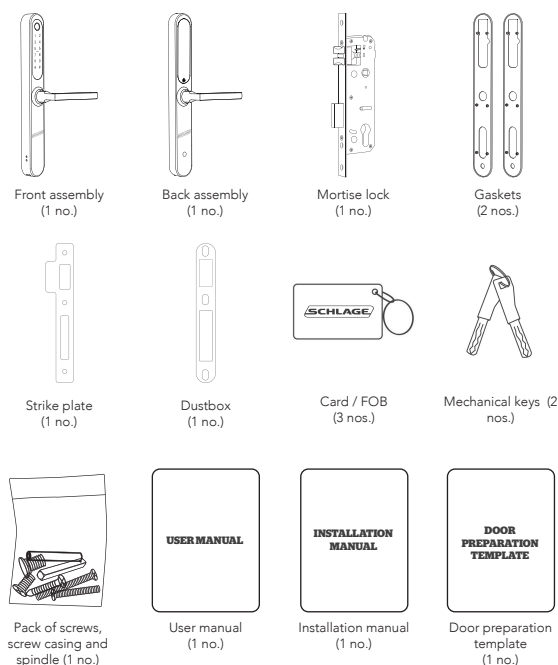
- To clean the lock, please use only a dry cloth. Avoid using water or any liquid, as it may damage the electronic circuitry of the lock. Additionally, it is important to keep the lock away from corrosive substances to prevent damage or rusting of the product surface.



### Battery life of product

- **Battery lifecycle**  
4 X 1.5V AA size LR6 batteries can last for at least 1 year (assuming 10 openings per day).
- **Low battery warning**  
When receive low battery notification, please replace the batteries as soon as possible even though the lock could work for another 50 times.

## PRODUCT COMPOSITION & COMPONENTS



## WARRANTY

### Warranty Card (Authorized Distributor's Copy)

Product Information			
S/N		Product code	
Purchased Date		Purchased location	
Authorized Distributor		Installation Date	
Installed by	<input type="checkbox"/> By distributor <input type="checkbox"/> Installation by yourself (warranty will be void due to improper installation)		

Customer Information			
Name		Contact No.	
Address			



### Warranty Card (Customer's Copy)

Product Information			
S/N		Product code	
Purchased Date		Purchased location	
Authorized Distributor		Installation Date	
Installed by	<input type="checkbox"/> By distributor <input type="checkbox"/> Installation by yourself (warranty will be void due to improper installation)		

Customer Information			
Name		Contact No.	
Address			

## 4

- **Out of power warning**  
Unlock your digital lock with mechanical back-up key. Replace the batteries immediately after the door is opened.

In the event of an emergency, you can open the door using a power bank. After opening the door, please wait for 2 seconds before disconnecting the power supply, allowing the lock body to reset. To ensure normal operation, it is advisable to replace the battery on the inner panel ahead of time.

### Remove user access / Card loss

- Delete fingerprint with respect to the assigned fingerprint serial number.
- If you have forgotten the serial number associated with a user's fingerprint, it is recommended to delete all stored fingerprints and re-register the fingerprint access for active users.
- If a card is lost, it is important to delete the user card access based on the associated card serial number of the lost card.
- If you are unsure of the serial number, it is recommended to delete access for all user cards and re-register them for active key card holders.

### Stop triggered alarm

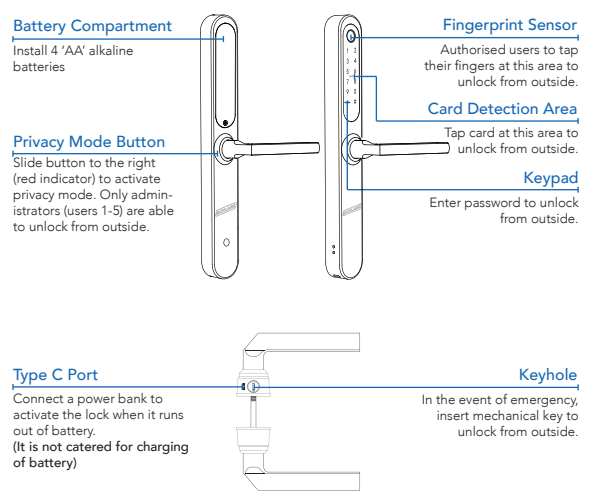
If tampering is detected, the built-in alarm will be triggered, resulting in a continuous ringing sound. To deactivate the alarm, simply enter a valid user code into the lock. This will halt the alarm from ringing.

## 6

	Name	Product Specification
1	Front Assembly	39mm(W) / 310mm(H) / 23mm(D)
2	Back Assembly	39mm(W) / 310mm(H) / 23mm(D)
3	Mortise Lock (30mm Backset)	47mm(W) / 215mm(H) / 22mm(D)
	40mm Backset	53mm(W) / 173mm(H) / 22mm(D)
	60mm Backset	85mm(W) / 173mm(H) / 22mm(D)
4	Gaskets	2 pieces
5	Strike plate	24mm(W) / 40mm(EW) / 198mm (H)
6	Card / FOB	3 pieces
7	Emergency Key	2 pieces
8	Spindle	2 pieces
9	Battery	4 X 1.5V AA size LR6 batteries
10	Screws	1 set
11	User Manual	Main user manual
12	Door Preparation Template	Use guide to make hole on the door
13	Installation Manual	Main installation manual
14	Installation Condition	Door thickness 35~60mm
15	High Temperature Warning	<p><b>Working temperature:</b> -15°C~55°C  <b>Sensor working temperature (high):</b> 60°C±5°C</p> <p>If high temperature is detected that may potentially sparks a fire, the alarm will be triggered with a beeping sound to notify user.</p> <p>If the interior body is exposed to direct sun for a long time and exceeds the set temperature, a beep sound will ring to notify the user. The high temperature detection feature also works with double locking function.</p>

W: Width  
EW: Extended Width  
H: Height  
D: Depth

# FUNCTIONS



# SETTINGS

## Settings Description

Program Code	1 (6 digits)	You cannot unlock with program code
PIN	100 (6-10 digits)	Initial administrator code is '123456' Support <b>fake PIN code</b>
Finger-print	100	No user fingerprint is stored in the lock in initial setting
Card	100	No user card is stored in the lock in initial setting

### 1.1.1 Adding a new administrator

Fingerprint	Hand icon	1	#	AC	#	1	1	UN	#	1	Fingerprint icon	x 4
Card	Hand icon	1	#	AC	#	1	1	UN	#	2	Card icon	
PIN	Hand icon	1	#	AC	#	1	1	UN	#	3	RC	# RC #

### 1.1.2 Adding a new user

Fingerprint	Hand icon	1	#	AC	#	1	2	UC	#	1	Fingerprint icon	x 4
Card	Hand icon	1	#	AC	#	1	2	UC	#	2	Card icon	
PIN	Hand icon	1	#	AC	#	1	2	UC	#	3	RC	# RC #

### 1.1.3 Delete user code

Hand icon	1	#	AC	#	1	3	UC	#
-----------	---	---	----	---	---	---	----	---

### 1.1.4 Delete user type

Fingerprint	Hand icon	1	#	AC	#	1	4	1	#
Card	Hand icon	1	#	AC	#	1	4	2	#
PIN	Hand icon	1	#	AC	#	1	4	3	#

## 1.2 System setting

Hand icon	1	#	AC	#	2	1	Time and date
						2	Language
						3	Volume
						4	2 factor unlocking
						5	Anti-pry function

### 1.2.1 Set date and time

Hand icon	1	#	AC	#	2	1	YY MM DD HH MM	#
-----------	---	---	----	---	---	---	----------------	---

### 1.5 Activate passage lock

Hand icon	RC	#	Lock icon	0	Hold for 3 seconds
-----------	----	---	-----------	---	--------------------

The passage lock mode can be easily deactivated by administrators or users using their registration code, fingerprints, or access cards.

## 2 Wireless module setting

Hand icon	8	#	RC	#	Follow instruction on mobile app to continue with the setup
-----------	---	---	----	---	---

### Mobile Access

The lock is now available to be paired with a mobile device using the Schlage Base app. Use the Schlage Base app to set up your lock, scan the QR code below to download the app.



App Store download for iOS user



Google Play Store download for Android user

**Base** For detailed instructions on using the Schlage Base application, please scan the QR code below to download the application user manual.



Schlage Base App User Manual (WiFi Connectivity)

## Factory Setting

Item	Setting Status	Ref. Page
Language (English/Chinese)	English	10
Volume	3 levels	10
Time & date	YY MM DD HH MM	9

\*Initial administrator code: press 123456 followed by # to unlock

### How to replace battery

If the voltage is lower than 4.8V, the lock will trigger an alarm every time the lock is unlocked. Remove the battery cover and replace the 4 "AA" alkaline batteries.

### Shortcut icons with descriptions

Hand icon	Touch to activate keypad	Fingerprint icon	Fingerprint	Random code icon	Random code
AC	Administrator code (123456)	* [*] button		Card / FOB icon	Card / FOB
UN	User number (1-5)	# [#] button			
UC	User code (6-100)	Lock icon	Unlock		
RC	Registration code (6-9 digits)	Lock icon	Lock		

### 1. System menu

Hand icon	1	#	AC	#	1	User management
					2	System settings
					3	Restore factory setting

### 1.1 User management

Hand icon	1	#	AC	#	1	1	Add administrator
						2	Add users
						3	Delete by User Code
						4	Delete by User Type

### 1.2.2 Change language

English	Hand icon	1	#	AC	#	2	2	1
Chinese								2

### 1.2.3 Change volume

Volume up	Hand icon	1	#	AC	#	2	3	1	#
Volume down								2	

### 1.2.4 Set 2 factor unlock

Normal setting	Hand icon	1	#	AC	#	2	4	1
2 factor unlock								2

### 1.2.5 Set anti-pry function

Enable	Hand icon	1	#	AC	#	2	5	1
Disable								2

### 1.3.1 Restore factory setting

Hand icon	1	#	AC	#	3	#
-----------	---	---	----	---	---	---

### 1.3.2 Activate random security coding function

Hand icon	Random code icon	RC	#	Lock icon
-----------	------------------	----	---	-----------

## 1.4 Unlock digital lock from outside

Fingerprint	Fingerprint icon	Place your finger on the fingerprint sensor
Card	Card icon	Place card on the card reader area
PIN	Hand icon	RC # Lock icon

## About Allegion™

Allegion (NYSE: ALLE) is a global pioneer in seamless access, with leading brands like CISA®, Interflex®, LCN®, Schlage®, SimonsVoss® and Von Duprin®. Focusing on security around the door and adjacent areas, Allegion secures people and assets with a range of solutions for homes, businesses, schools and institutions.

For more, visit [www.allegion.com](http://www.allegion.com)



### Contact Number

ALLEGION (SOUTHEAST ASIA) PTE LTD	(65) 6227 7318
ALLEGION INDIA PRIVATE LIMITED	(91) 080 61229530
ALLEGION HONG KONG LIMITED	(852) 2235-0600/2565-1409
ALLEGION THAILAND LIMITED	(66) 20514141

Email: [sea.info@allegion.com](mailto:sea.info@allegion.com)  
[www.allegion.com.sg](http://www.allegion.com.sg)

