

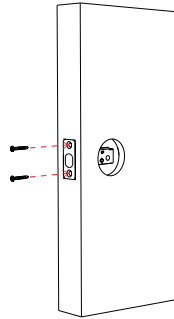


Schlage **S-620DB** INSTALLATION MANUAL

1. PREPARE THE DOOR

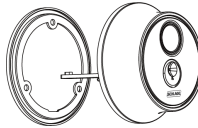
Prepare the door as per the Schlage S-620DB Digital Door Lock Template.

Mount lock body into positions.



2. ATTACH GASKETS

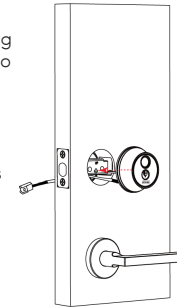
Attach and secure gasket to the external unit.



3. POSITION EXTERNAL UNIT TO THE DOOR

Position the external unit to sit flush on the door, ensuring that the cable and spindle go through the fixing holes.

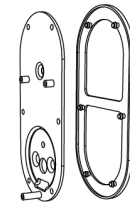
Ensure the spindle always remain in a horizontal position and the deadbolt is always retracted.



4. ATTACH GASKET AND SECURE FIXING PLATE

Attach and secure a gasket to the fixing plate of the external unit.

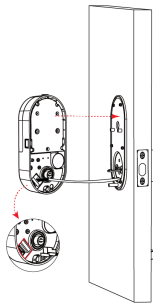
Screw and secure the fixing plate to the door.



5. POSITION EXTERNAL UNIT TO THE DOOR

Connect the cable while ensuring excess cable is concealed inside the door.

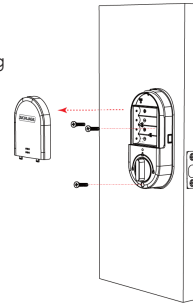
Line up spindle and insert into the spindle hole located at the body of the unit.



5. POSITION EXTERNAL UNIT TO THE DOOR (CONTINUE)

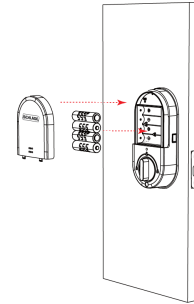
Remove battery cover.

Affix the internal unit using the fixing screws.



6. INSTALL BATTERIES

Install 4x AA alkaline batteries and secure the battery cover.



Scan the appropriate QR code opposite to download the Schlage Base app to your mobile device.

To pair the lock with the app, please refer to the user manual and app user manual for detailed pairing instructions. Both manuals can be accessed on schlage-locks.asia.



App Store download for iOS users



Google Play Store download for Android users